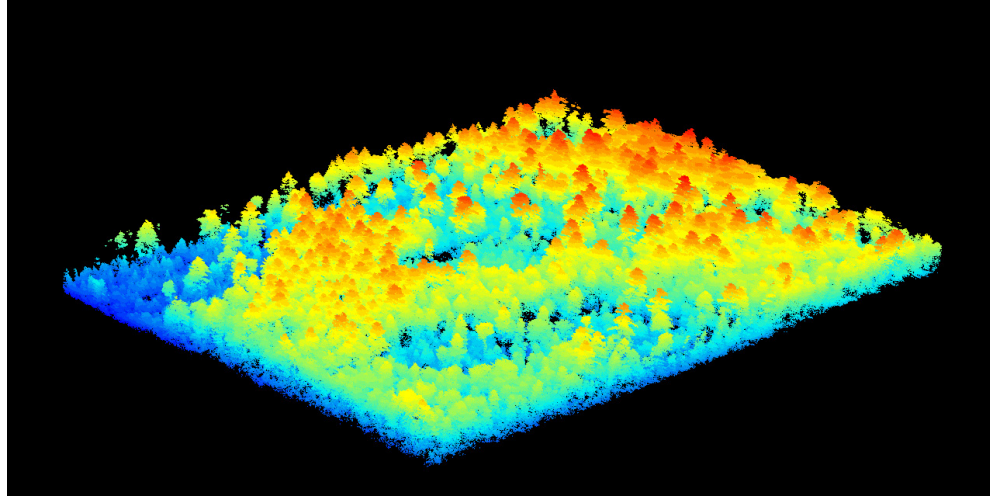


# 3D Point Clouds for Beginners

Tony Guay  
Remote Sensing Specialist  
Wheatland Geospatial Lab



This one-day workshop will explore the basics of 3D point cloud processing using tools in Global Mapper Pro and ArcGIS Pro. You will learn where to get publicly available point cloud data, how to visualize your data, how to create bare earth DTMs, canopy surface models, canopy height models, hillshades, and other common raster lidar metrics. Participants will walk away with the tools and knowledge to apply the workflows used in the workshop to their existing lidar and photo-based point cloud datasets.



Wednesday, July 20, 2022  
9:00 am to 4:30 pm  
Wheatland Geospatial Analysis Laboratory  
Nutting Hall | UMaine | Orono, ME

**Cost: \$95.00. 5.5 Cat 1 SAF CFE hours will be provided.** Contact Tony Guay at [anthony.p.guay@maine.edu](mailto:anthony.p.guay@maine.edu) with any questions.

Register at <https://www.eventbrite.com/e/365929965377>

**Made possible with generous support from the Maine Timberlands Charitable Trust**



If you are a person with a disability and need an accommodation to participate in this program, please call Karen Cliff, School of Forest Resources, as early as possible at 581-2841 or [karen.cliff@maine.edu](mailto:karen.cliff@maine.edu) to discuss your needs.

The University of Maine does not discriminate on the grounds of race, color, religion, sex, sexual orientation, including transgender status and gender expression, national origin, citizenship status, age, disability, genetic information, or veteran status in employment, education, and all other programs and activities. The following person has been designated to handle inquiries regarding nondiscrimination policies: Director, Office of Equal Opportunity, 101 North Stevens Hall, 581.1226, [eoinfo@umit.maine.edu](mailto:eoinfo@umit.maine.edu).