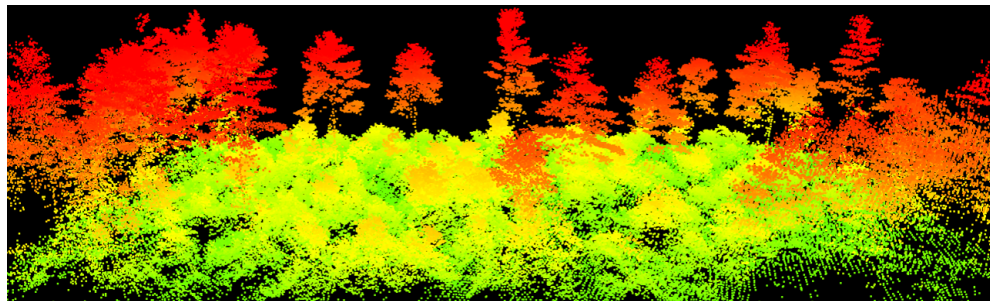


Wheatland Workshop

Lidar Enhanced Forest Inventory Demystified

Tony Guay & Dave Sandilands
Wheatland Geospatial Lab



This half-day workshop will explore commonly used workflows for lidar-based Enhanced Forest Inventories. We will discuss core concepts, important considerations for success, and provide hands-on experience with key steps involved to generate EFI prediction maps. We will also address how to effectively integrate EFIs into your GIS workflows and decision-making process.



Wednesday, June 22, 2022
9:00 am to 1:00 pm
Wheatland Geospatial Analysis Laboratory
Nutting Hall | UMaine | Orono, ME

Cost: \$60.00. 3.5 Cat 1 SAF CFE hours will be provided. Contact Tony Guay at anthony.p.guay@maine.edu with any questions.

Register at <https://www.eventbrite.com/e/354729354047>

Made possible with generous support from the Maine Timberlands Charitable Trust

If you are a person with a disability and need an accommodation to participate in this program, please call Karen Cliff, School of Forest Resources, as early as possible at 581-2841 or karen.cliff@maine.edu to discuss your needs.

The University of Maine does not discriminate on the grounds of race, color, religion, sex, sexual orientation, including transgender status and gender expression, national origin, citizenship status, age, disability, genetic information, or veteran status in employment, education, and all other programs and activities. The following person has been designated to handle inquiries regarding nondiscrimination policies: Director, Office of Equal Opportunity, 101 North Stevens Hall, 581.1226, eoinfo@umit.maine.edu.

